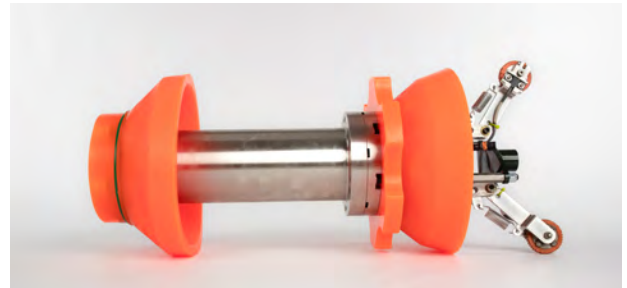
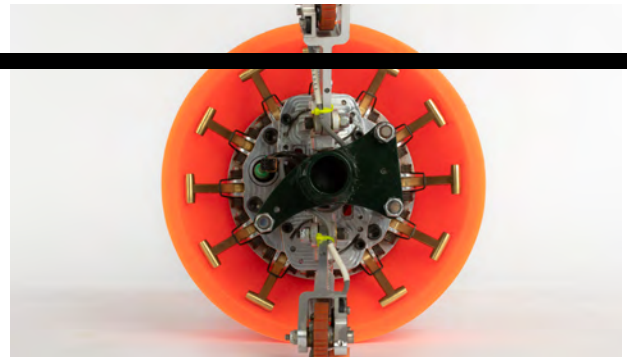




**Pipeline  
Paramedics**

# DIGI-CAL SPECS:

# 10.75"



**HIGHLIGHTS:**

- 1. NUMBER OF ARMS - 12**
- 2. POWER SUPPLY - 300 hrs +**
- 3. MINIMUM BORE IN STRAIGHT PIPE OF PIPE OD - 30%**
- 4. OPERATING PRESSURE RANGE - 2500 psi or 172 bar**

**NOTES:**

- + Approximate pressure range. Consult WPS for operation in low pressure gas lines.
- + Standard configuration. Electronics engine provides samplings of up to 12 sensors & 24 hall effects.
- + Embedded firmware conserves battery power when unit is idle.

**ANOMALY IDENTIFICATION:**

Anomaly Detection Threshold	±0.50% Of Pipe Outer Diameter
Deformation Sensor Type	Low Kinetic Energy Rotary Magnetic Arm Sensors
Data Collection Rate	Up To 835 Samples Per Second
High-Res Deformation Sensors	Yes

**TYPICAL OPERATING PARAMETERS:**

Travel Distance Resolution	1.5" (38.1mm)
Odometer Wheels	2
Firmware Algorithm For Instant Wheel Failure Recovery	Yes
Maximum Tool Speed	15ft/Sec (4.6m/Sec)
Tool Transmitter	22hz Extremely Low Frequency
Data Storage	Non-Volatile Micro 16gb SD Card
Defect Location Aids	Agms, On Board Ins & Pipeline Features
Inertial Navigation Sensors	State Of The Art Microelectronic Imu Module
Minimum Bend Radius	1.5D / 3R
Minimum Bore In Straight Pipe	30%
Operating Pressure Range	2500 psi or 172 bar
In-Line Temperature Range	-4 To 140 °f (-20 To 60 °c)